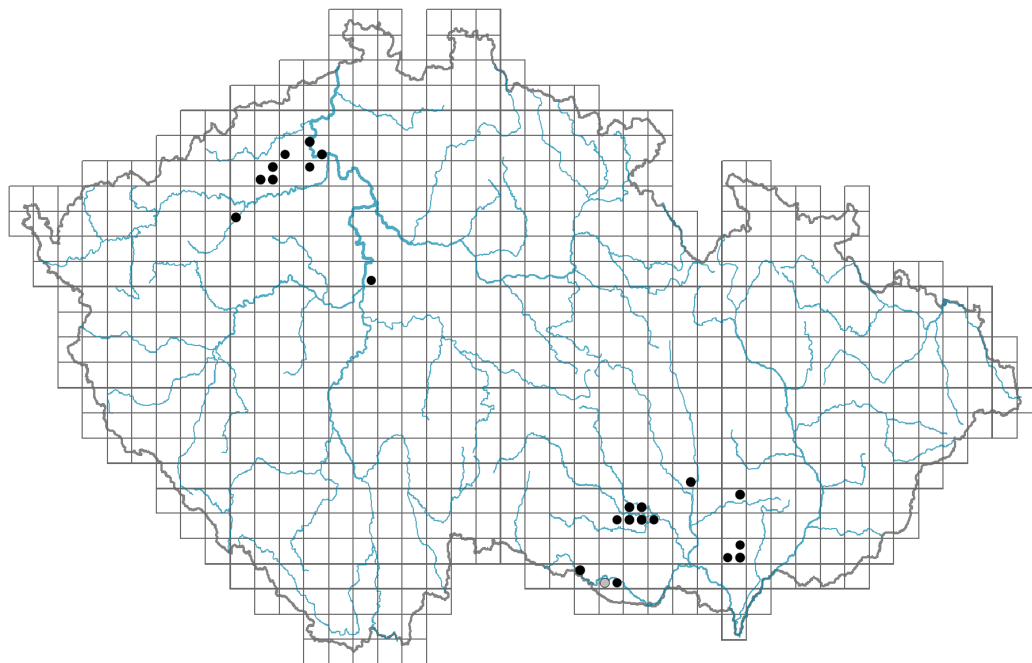


Stipa dasyphylla

Distribution



© Dana Michalcová

Map info

● revised records

○ unrevised records

On the map are not visualized records without the coordinates and records marked as incorrect or doubtful.



© Dana Michalcová

Habitus and growth type

Height [m]: **0.3-0.8**

Growth form: **clonal herb**

Life form: **hemicryptophyte**

Life strategy: **CS - competitor/stress-tolerator**

Leaf

Leaf presence and metamorphosis: **leaves present, not modified**

Leaf arrangement (phyllotaxis): **alternate**

Leaf shape: **simple - entire**

Stipules: **absent**

Petiole: **absent**

Leaf life span: **summer green**

Leaf anatomy: **scleromorphic**

Flower

Flowering period [month]: **May-June**

Flowering phase: **6 Cornus sanguinea-Melica uniflora (start of early summer)**

Flower colour: **green**

Perianth type: **reduced**

Perianth fusion: **reduced**



© Dana Michalcová

Inflorescence type: **spica e spiculis composita**

Dicliny: **synoecious**

Generative reproduction type: **mixed mating**

Pollination syndrome: **wind-pollination, selfing, cleistogamy**

Fruit, seed and dispersal

Fruit type: **dry fruit - caryopsis**

Fruit colour: **white, brown**

Reproduction type: **mostly by seed/spores, rarely vegetatively**

Dispersal unit (diaspore): **fruit, infrutescence or its part**

Dispersal strategy: **Bidens (mainly autochory and epizoochory)**

Myrmecochory: **non-myrmecochorous (b)**

Belowground organs and clonality

Storage organ: **tuft**

Trophic mode

Parasitism and mycoheterotrophy: **autotrophic**

Carnivory: **non-carnivorous**

Symbiotic nitrogen fixation: **no nitrogen-fixing symbionts**

Karyology

Chromosome number (2n): **44**

Ploidy level (x): **4**

2C genome size [Mbp]: **2247.01**

1Cx monoploid genome size [Mbp]: **561.75**

Genomic GC content: **46.6 %**

Taxon origin

Origin in the Czech Republic: **native**

Ecological indicator values

Ellenberg-type indicator values

Light indicator value: **9 - full light plant, occurring only in fully irradiated places, not at less than 50% of diffuse radiation incident in an open area**

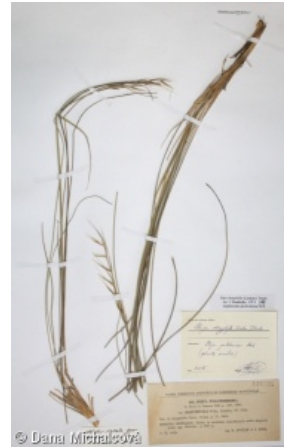
Temperature indicator value: **7 - heat indicator, occurring in relatively warm lowlands**

Moisture indicator value: **2 - transition between values 1 and 3**

Reaction indicator value: **7 - indicator of slightly acidic to slightly basic conditions, never occurring in very acidic conditions**

Nutrient indicator value: **2 - transition between values 1 and 3**

Salinity indicator value: **0 - not salt tolerant, glycophyte**



Habitat and sociology

Occurrence in habitats

8 Dry grasslands

8A Hercynian dry grasslands on rock outcrops: **2 - optimum**

8C Narrow-leaved sub-continental steppes: **2 - optimum**

11 Heathlands and scrub

11N Low xeric scrub: **1 - rare occurrence**

Affinity to the forest environment

Affinity to the forest environment in Thermophyticum: **0 - taxon that does not spontaneously occur in Czech forests**

Affinity to the forest environment in Mesophyticum and Oreophyticum: **0 - taxon that does not spontaneously occur in Czech forests**

Diagnostic taxon

Diagnostic taxon of associations: [THD05 *Stipetum tirsae*](#)

Ecological specialization indices

Ecological specialization index for all vegetation types: **5.8**

Ecological specialization index for non-forest vegetation: **5.6**

Colonization ability

Index of colonization success (ICS): **1**

Distribution and frequency

Floristic zone: **southern temperate, submeridional**

Floristic region: **Europe, Western Siberia**

Continental degree: **8**

Distribution range extension along the continentality gradient: **4**

Elevational belt in the Czech Republic: **colline belt**

Occurrence frequency in the basic grid mapping cells and quadrants of the basic grid mapping cells: 21

taxon.data.freq_in_quad: 31

Commonness in vegetation plots from the Czech Republic

Occurrence frequency in vegetation plots: **0 %**

Occurrence frequency in vegetation plots with a cover above 5%: **14.3 %**

Occurrence frequency in vegetation plots with a cover above 25%: **0 %**

Occurrence frequency in vegetation plots with a cover above 50%: **0 %**

Mean percentage cover in vegetation plots: **3.4 %**

Maximum percentage cover in vegetation plots: **13 %**

Number of habitats with taxon occurrence in the Czech Republic

Number of narrow habitats in which the taxon occurs: **3**

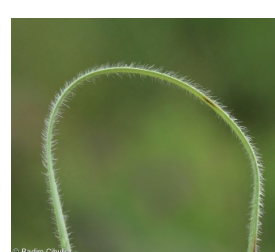
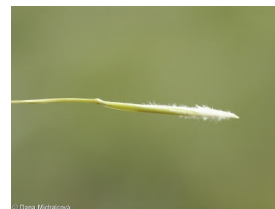
Number of narrow habitats in which the taxon has its optimum: **2**

Number of broad habitats in which the taxon occurs: **2**

Number of broad habitats in which the taxon has its optimum: **1**

Threats and protection

Red List 2017 (national categories): **C2r - endangered taxon, rare**



Red List 2017 (IUCN categories): **VU - vulnerable**

Legal protection: **endangered taxon**