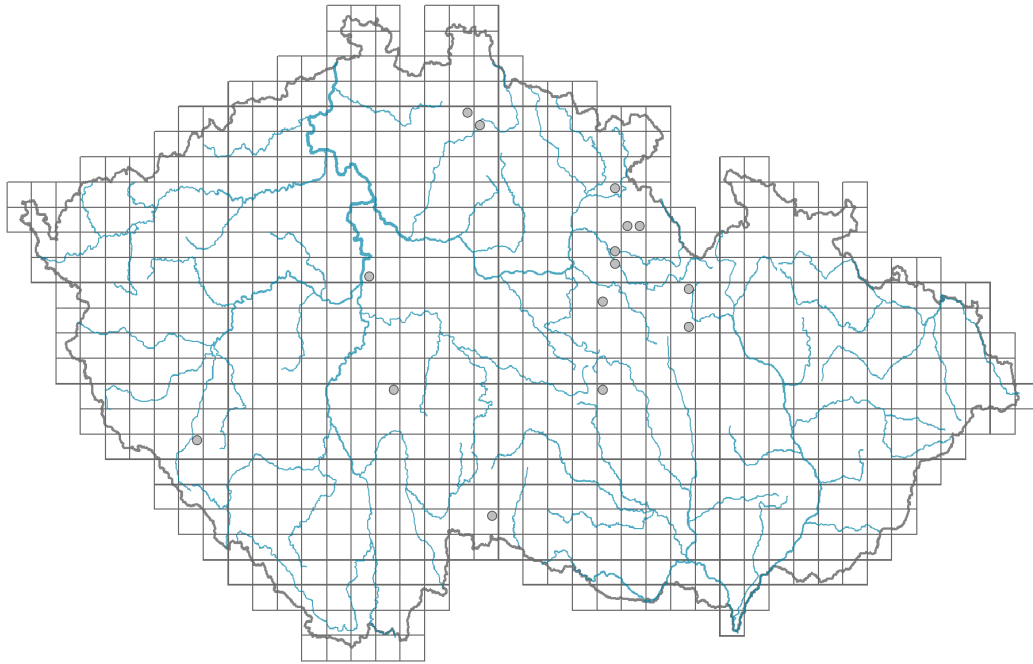


Tanacetum balsamita

Distribution



© Dana Holubová

Map info

● revised records

○ unrevised records

On the map are not visualized records without the coordinates and records marked as incorrect or doubtful.

Habitus and growth type

Height [m]: **0.3**

Life form: **hemicryptophyte**

Leaf

Leaf presence and metamorphosis: **leaves present, not modified**

Leaf arrangement (phyllotaxis): **alternate, rosulate**

Leaf shape: **simple - entire**

Stipules: **absent**

Petiole: **both present and absent**

Flower

Flowering period [month]: **July-October**

Flower colour: **white, yellow**

Flower symmetry: **actinomorphic, zygomorphic**

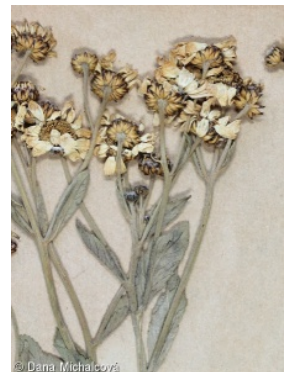
Perianth type: **calyx reduced, corolla present**

Perianth fusion: **fused**

Shape of the sympetalous corolla or syntepalous perianth: **ligulate, tubular**

Calyx fusion: **pappus**

Inflorescence type: **corymbothyrus ex anthodiis compositus**



© Dana Michalčová



© Dana Michalčová

Fruit, seed and dispersal

Fruit type: **dry fruit - achene/cypsela/samara**

Fruit colour: **yellow, brown**

Myrmecochory: **probably non-myrmecochorous nv**

Trophic mode

Parasitism and mycoheterotrophy: **autotrophic**

Carnivory: **non-carnivorous**

Symbiotic nitrogen fixation: **no nitrogen-fixing symbionts**

Taxon origin

Origin in the Czech Republic: **archaeophyte/neophyte**

Invasion status: **casual**

Geographic origin: **Europe, Mediterranean**

Period of introduction: **Late Middle Ages and Early Modern Period (merged category, 1200-1800)**

Introduction pathway: **intentional - ornamental, intentional - other**

Habitat and sociology

Occurrence in habitats

6 Meadows and mesic pastures

6C Pastures and park grasslands: **1 - rare occurrence**

13 Anthropogenic vegetation

13D Perennial thermophilous ruderal vegetation: **2 - optimum**

13E Perennial nitrophilous herbaceous vegetation of mesic sites: **1 - rare occurrence**

Affinity to the forest environment

Affinity to the forest environment in Thermophyticum: **0 - taxon that does not spontaneously occur in Czech forests**

Affinity to the forest environment in Mesophyticum and Oreophyticum: **0 - taxon that does not spontaneously occur in Czech forests**

Distribution and frequency

Occurrence frequency in the basic grid mapping cells and quadrants of the basic grid mapping cells: 14

taxon.data.freq_in_quad: 15

Number of habitats with taxon occurrence in the Czech Republic

Number of narrow habitats in which the taxon occurs: **3**

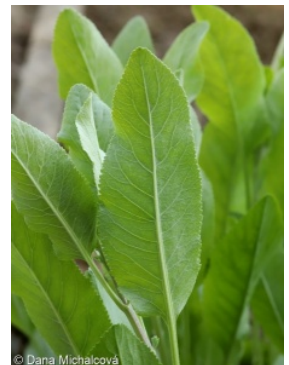
Number of narrow habitats in which the taxon has its optimum: **1**

Number of broad habitats in which the taxon occurs: **2**

Number of broad habitats in which the taxon has its optimum: **1**

Threats and protection

Red List 2017 (national categories): **taxon is not on the Red List**



Red List 2017 (IUCN categories): **LC(NA) - least concern (taxon is not on the Red List)**

Legal protection: **not protected by law**

