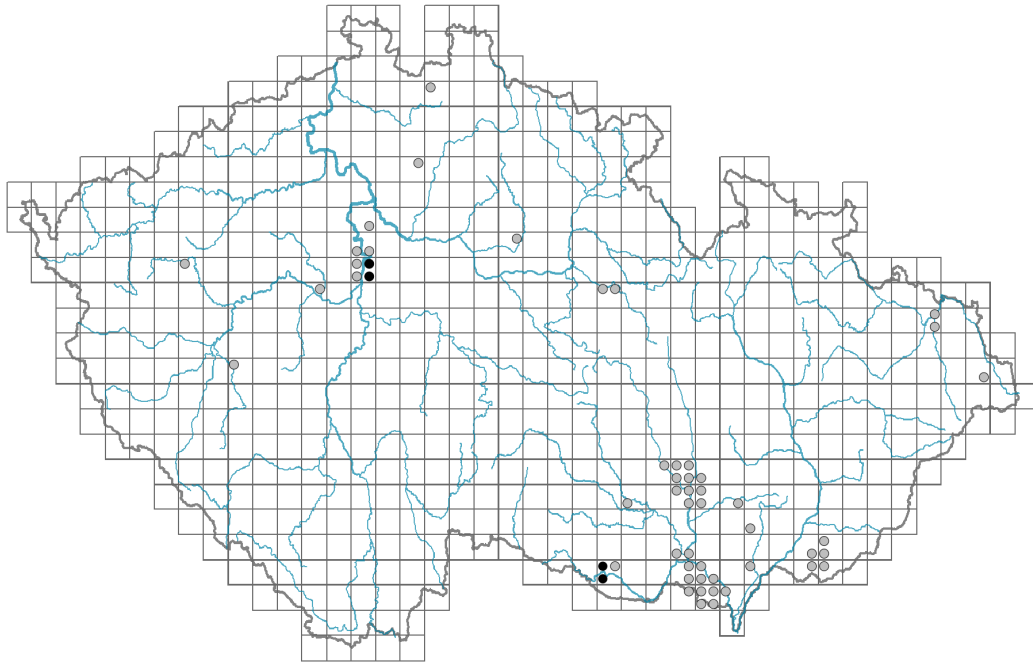


Viola suavis

Distribution

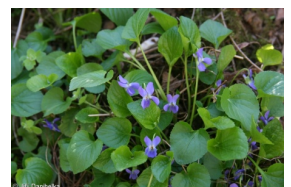


Map info

● revised records

● unrevised records

On the map are not visualized records without the coordinates and records marked as incorrect or doubtful.



Habitus and growth type

Height [m]: **0.1-0.2**

Growth form: **clonal herb**

Life form: **hemicryptophyte**

Life strategy: **CSR - competitor/stress-tolerator/ruderal**

Leaf

Leaf presence and metamorphosis: **leaves present, not modified**

Leaf arrangement (phyllotaxis): **rosulate**

Leaf shape: **simple - entire**

Stipules: **present**

Petiole: **present**

Leaf life span: **summer green**

Flower

Flowering period [month]: **March-May**

Flower colour: **white, blue, blue-violet**

Flower symmetry: **zygomorphic**

Perianth type: **calyx and corolla**

Perianth fusion: **free**

Calyx fusion: **aposepalous**

Inflorescence type: **flores solitarii**

Dicliny: **synoecious**

Generative reproduction type: **mixed mating**

Pollination syndrome: **insect-pollination, cleistogamy**

Fruit, seed and dispersal

Fruit type: **dry fruit - capsule**

Fruit colour: **brown**

Reproduction type: **by seed/spores and vegetatively**

Dispersal unit (diaspore): **seed**

Dispersal strategy: **Allium (mainly autochory)**

Myrmecochory: **myrmecochorous, myrmecochorous nv**

Belowground organs and clonality

Shoot metamorphosis: **stolon, rhizome**

Storage organ: **stolon, rhizome**

Type of clonal growth organ: **stolon**

Freely dispersible organs of clonal growth: **absent**

Shoot life span (cyclicality): **monocyclic shoots prevailing**

Branching type of stem-derived organs of clonal growth: **monopodial**

Primary root: **absent**

Persistence of the clonal growth organ [year]: **2.5**

Number of clonal offspring: **3.3**

Lateral spreading distance by clonal growth [m]: **0.07**

Clonal index: **5**

Bud bank

Number of buds per shoot at the soil surface (root buds excluded): **15**

Number of buds per shoot at a depth of 0–10 cm (root buds excluded): **15**

Number of buds per shoot at a depth greater than 10 cm (root buds excluded): **0**

Size of the belowground bud bank (root buds excluded): **30**

Depth of the belowground bud bank (root buds excluded) [cm]: **3**

Number of buds per shoot at the soil surface (root buds included): **15**

Number of buds per shoot at a depth of 0–10 cm (root buds included): **15**

Number of buds per shoot at a depth greater than 10 cm (root buds included): **0**

Size of the belowground bud bank (root buds included): **30**

Depth of the belowground bud bank (root buds included) [cm]: **3**

Trophic mode

Parasitism and mycoheterotrophy: **autotrophic**

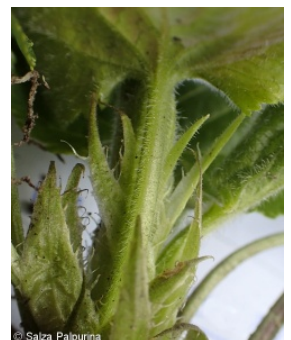
Carnivory: **non-carnivorous**

Symbiotic nitrogen fixation: **no nitrogen-fixing symbionts**

Karyology

Chromosome number (2n): **40**

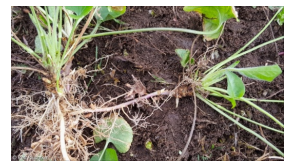
Ploidy level (x): **8**



2C genome size [Mbp]: **2724.8**
 1Cx monoploid genome size [Mbp]: **340.6**
 Genomic GC content: **41.8 %**

Taxon origin

Origin in the Czech Republic: **archaeophyte/neophyte**
 Invasion status: **naturalized**
 Geographic origin: **Mediterranean**
 Period of introduction: **Late Middle Ages and Early Modern Period (merged category, 1200-1800)**
 Introduction pathway: **intentional - ornamental**



Ecological indicator values

Ellenberg-type indicator values

Light indicator value: **6x - transition between values 5 and 7; rarely at less than 20% of diffuse radiation incident in an open area (generalist)**
 Temperature indicator value: **7 - heat indicator, occurring in relatively warm lowlands**
 Moisture indicator value: **5 - indicator of fresh soils, focus on soils of average moisture, missing on wet and on soils that frequently dry out**
 Reaction indicator value: **7 - indicator of slightly acidic to slightly basic conditions, never occurring in very acidic conditions**
 Nutrient indicator value: **6 - transition between values 5 and 7**
 Salinity indicator value: **0 - not salt tolerant, glycophyte**

Habitat and sociology

Occurrence in habitats

1 Vegetation of cliffs, screes and walls
 1C Walls: **1 - rare occurrence**
 8 Dry grasslands
 8F Thermophilous forest fringe vegetation: **1 - rare occurrence**
 11 Heathlands and scrub
 11L Tall mesic and xeric shrub: **2 - optimum**
 11R Scrub and pioneer woodland of forests clearings: **2 - optimum**
 12 Forests
 12B Alluvial forests: **1 - rare occurrence**
 12C Oak-hornbeam forests: **1 - rare occurrence**
 12D Ravine forests: **2 - optimum**
 12J Acidophilous thermophilous oak forests: **1 - rare occurrence**
 12T Robinia pseudacacia plantations: **2 - optimum**
 12U Plantations of broad-leaved non-native trees: **2 - optimum**
 13 Anthropogenic vegetation
 13E Perennial nitrophilous herbaceous vegetation of mesic sites: **2 - optimum**
 Affinity to the forest environment
 Affinity to the forest environment in Thermophyticum: **2.2 - taxon occurring partly in**

the forest, but mainly in open vegetation

Diagnostic taxon

Diagnostic taxon of associations: [TFF01 *Cerastietum*](#)

Ecological specialization indices

Ecological specialization index for all vegetation types: **4**

Ecological specialization index for forest vegetation: **5.1**

Distribution and frequency

Floristic zone: **northern temperate, southern temperate, submeridional, meridional**

Floristic region: **Europe, Western Asia**

Continentality degree: **6**

Distribution range extension along the continentality gradient: **5**

Elevational belt in the Czech Republic: **lowlands, colline belt**

Occurrence frequency in the basic grid mapping cells and quadrants of the basic grid mapping cells: **32**

taxon.data.freq_in_quad: 54

Commonness in vegetation plots from the Czech Republic

Occurrence frequency in vegetation plots: **0 %**

Occurrence frequency in vegetation plots with a cover above 5%: **0 %**

Occurrence frequency in vegetation plots with a cover above 25%: **0 %**

Occurrence frequency in vegetation plots with a cover above 50%: **0 %**

Mean percentage cover in vegetation plots: **2 %**

Maximum percentage cover in vegetation plots: **2 %**

Number of habitats with taxon occurrence in the Czech Republic

Number of narrow habitats in which the taxon occurs: **11**

Number of narrow habitats in which the taxon has its optimum: **6**

Number of broad habitats in which the taxon occurs: **5**

Number of broad habitats in which the taxon has its optimum: **3**

Threats and protection

Red List 2017 (national categories): **taxon is not on the Red List**

Red List 2017 (IUCN categories): **LC(NA) - least concern (taxon is not on the Red List)**

Legal protection: **not protected by law**