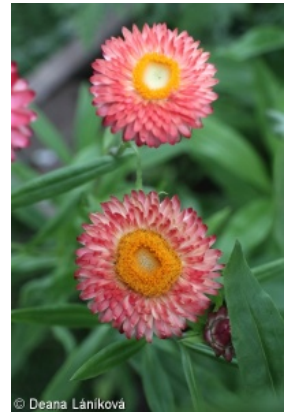
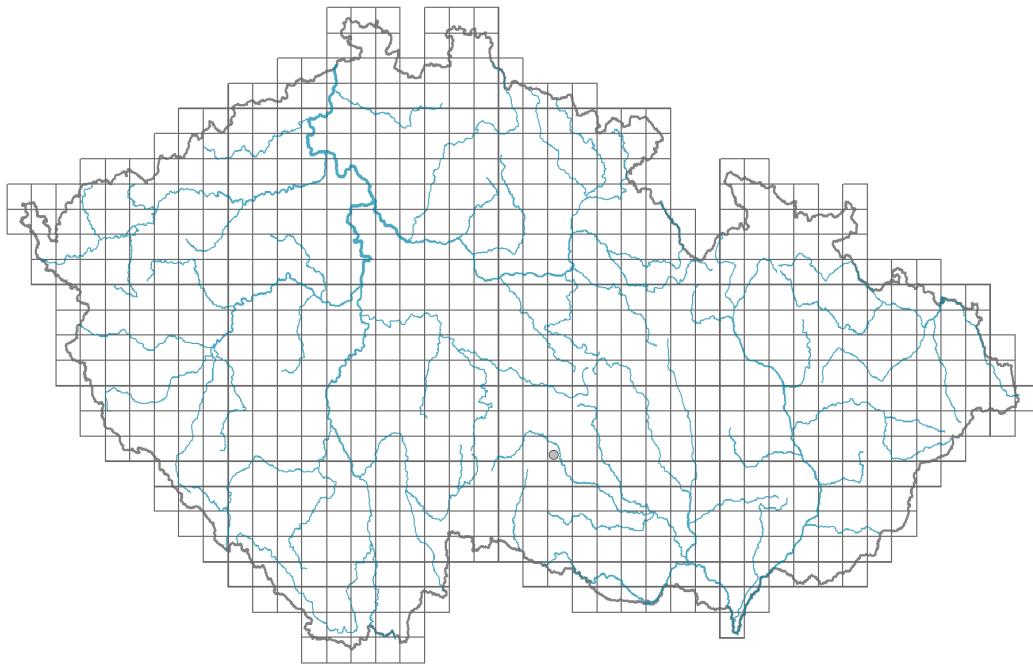


# *Xerochrysum bracteatum*

## Distribution



© Deana Lániková

### Map info

● revised records

● unrevised records

On the map are not visualized records without the coordinates and records marked as incorrect or doubtful.

## Habitus and growth type

Life form: **therophyte**

Life strategy (Pierce method based on leaf traits): **S/CS**

Life strategy (Pierce method, C-score): **33.8 %**

Life strategy (Pierce method, S-score): **61.8 %**

Life strategy (Pierce method, R-score): **4.5 %**

## Leaf

Leaf presence and metamorphosis: **leaves present, not modified**

Leaf arrangement (phyllotaxis): **alternate**

Leaf shape: **simple - entire**

Stipules: **absent**

Petiole: **absent**

## Flower

Flower colour: **yellow, orange, pink, red**

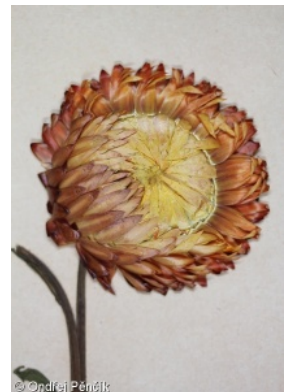
Flower symmetry: **actinomorphic**

Perianth type: **calyx reduced, corolla present**

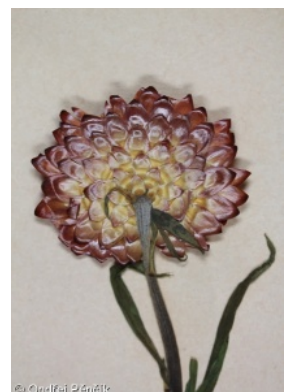
Perianth fusion: **fused**

Shape of the sympetalous corolla or syntepalous perianth: **tubular, filiform**

Calyx fusion: **pappus**



© Ondřej Pencík



© Ondřej Pencík

Inflorescence type: **corymbus ex anthodiis compositus**

## Fruit, seed and dispersal

Fruit type: **dry fruit - achene/cypsela/samara**

Myrmecochory: **non-myrmecochorous (b)**

## Trophic mode

Parasitism and mycoheterotrophy: **autotrophic**

Carnivory: **non-carnivorous**

Symbiotic nitrogen fixation: **no nitrogen-fixing symbionts**

## Taxon origin

Origin in the Czech Republic: **neophyte**

Invasion status: **casual**

Geographic origin: **Australia**

Year of the first record in the wild: **1991**

Period of introduction: **Recent Past (1950-2000)**

Introduction pathway: **intentional - ornamental**

## Habitat and sociology

Affinity to the forest environment

Affinity to the forest environment in Thermophyticum: **0 - taxon that does not spontaneously occur in Czech forests**

Affinity to the forest environment in Mesophyticum and Oreophyticum: **0 - taxon that does not spontaneously occur in Czech forests**

## Threats and protection

Red List 2017 (national categories): **taxon is not on the Red List**

Red List 2017 (IUCN categories): **LC(NA) - least concern (taxon is not on the Red List)**

Legal protection: **not protected by law**

