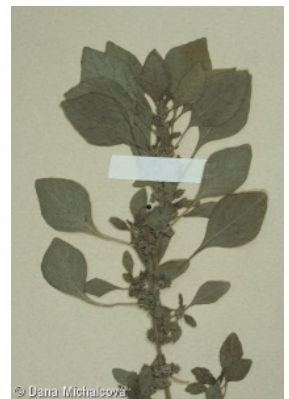
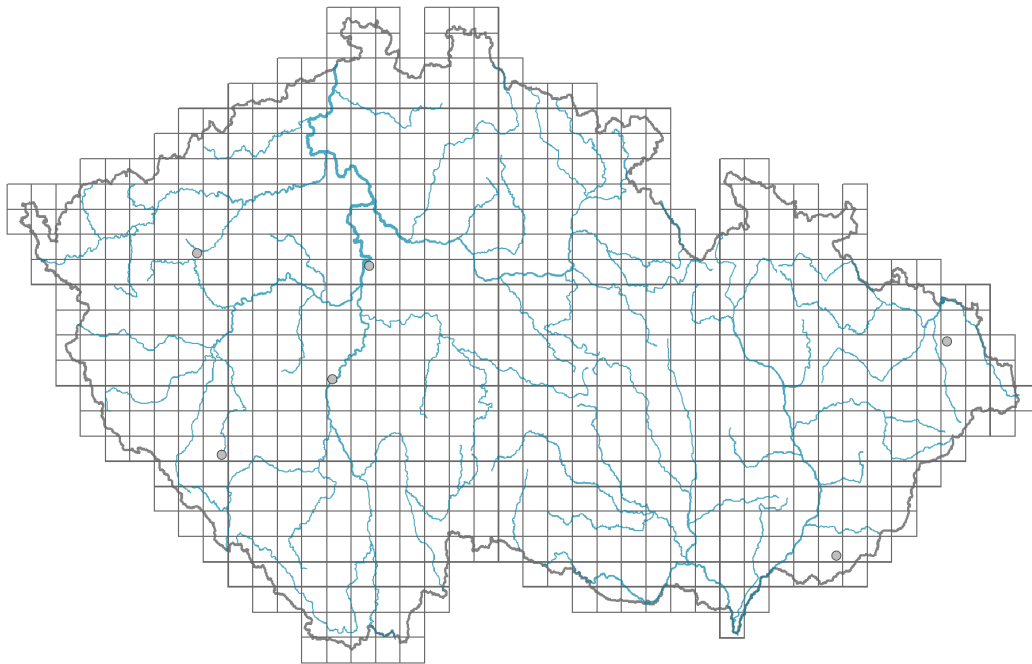


Amaranthus graecizans subsp. *sylvestris*

Distribution



© Dana Michalcová

Map info

● revised records

○ unrevised records

On the map are not visualized records without the coordinates and records marked as incorrect or doubtful.



© Dana Michalcová

Habitus and growth type

Life form: **therophyte**

Leaf

Leaf presence and metamorphosis: **leaves present, not modified**

Leaf arrangement (phyllotaxis): **alternate**

Leaf shape: **simple - entire**

Stipules: **absent**

Petiole: **present**

Flower

Flower colour: **green**

Flower symmetry: **actinomorphic**

Perianth type: **homochlamydeous**

Perianth fusion: **free**

Inflorescence type: **pseudospica**

Fruit, seed and dispersal

Fruit type: **dry fruit - capsule**

Fruit colour: **brown**

Dispersal unit (diaspore): **seed, fruit, infructescence or its part**



© Danieľa Škrtová Göttschová



© Dana Michalcová

Dispersal strategy: **Allium (mainly autochory)**

Myrmecochory: **non-myrmecochorous (b)**

Trophic mode

Parasitism and mycoheterotrophy: **autotrophic**

Carnivory: **non-carnivorous**

Symbiotic nitrogen fixation: **no nitrogen-fixing symbionts**

Taxon origin

Origin in the Czech Republic: **archaeophyte**

Invasion status: **casual**

Geographic origin: **Mediterranean**

Period of introduction: **Early Middle Ages (550-1200)**

Introduction pathway: **unintentional - agriculture, unintentional - anthropogenic**

Habitat and sociology

Affinity to the forest environment

Affinity to the forest environment in Thermophyticum: **0 - taxon that does not spontaneously occur in Czech forests**

Affinity to the forest environment in Mesophyticum and Oreophyticum: **0 - taxon that does not spontaneously occur in Czech forests**

Threats and protection

Red List 2017 (national categories): **A1 - extinct taxon**

Red List 2017 (IUCN categories): **RE - regionally extinct**

Legal protection: **not protected by law**