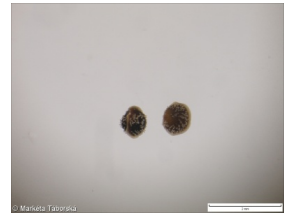
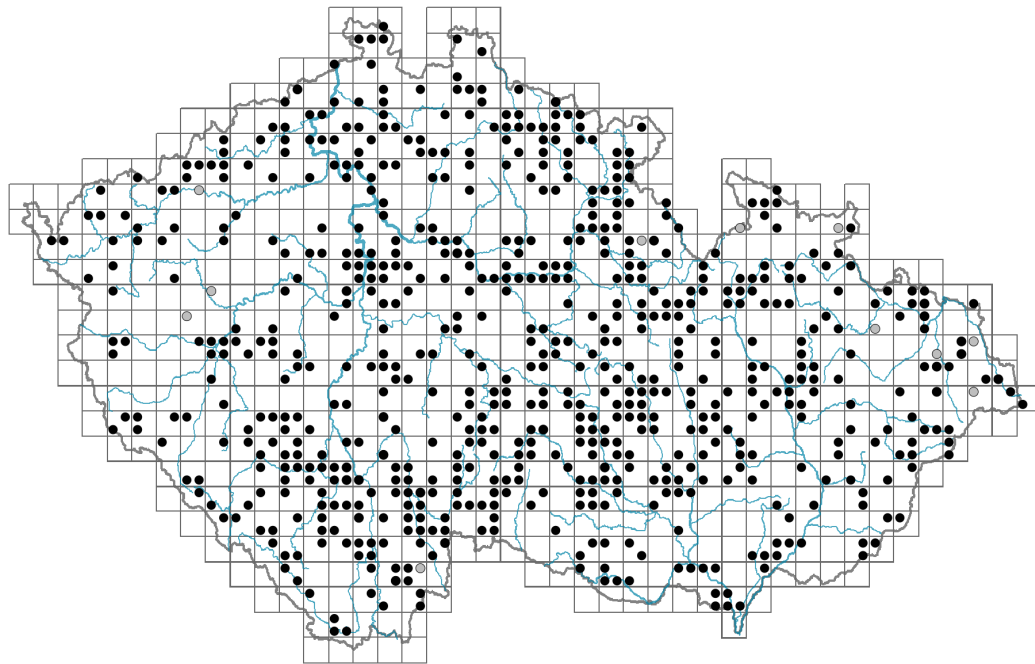


# *Spergula arvensis* subsp. *arvensis*

## Distribution



### Map info

● revised records

○ unrevised records

On the map are not visualized records without the coordinates and records marked as incorrect or doubtful.

## Habitus and growth type

Life form: **therophyte**

## Leaf

Leaf presence and metamorphosis: **leaves present, not modified**

Leaf arrangement (phyllotaxis): **verticillate**

Leaf shape: **simple - entire**

Stipules: **present**

Petiole: **absent**

## Flower

Flower colour: **white**

Flower symmetry: **actinomorphic**

Perianth type: **calyx and corolla**

Perianth fusion: **free**

Calyx fusion: **aposepalous**

Inflorescence type: **dichasium**

## Fruit, seed and dispersal

Fruit type: **dry fruit - capsule**

Fruit colour: **brown**

Dispersal unit (diaspore): **seed**  
Dispersal strategy: **Allium (mainly autochory)**  
Myrmecochory: **non-myrmecochorous (b)**

## **Trophic mode**

Parasitism and mycoheterotrophy: **autotrophic**  
Carnivory: **non-carnivorous**  
Symbiotic nitrogen fixation: **no nitrogen-fixing symbionts**

## **Karyology**

Chromosome number (2n): **18**  
Ploidy level (x): **2**  
2C genome size [Mbp]: **687.67**  
1Cx monoploid genome size [Mbp]: **343.84**  
Genomic GC content: **39.2 %**

## **Taxon origin**

Origin in the Czech Republic: **archaeophyte**  
Invasion status: **naturalized**  
Geographic origin: **Europe, Mediterranean**  
Period of introduction: **Early Middle Ages (550-1200)**  
Introduction pathway: **intentional - other, unintentional - agriculture**

## **Ecological indicator values**

Ellenberg-type indicator values  
Light indicator value: **6 - transition between values 5 and 7; rarely at less than 20% of diffuse radiation incident in an open area**  
Temperature indicator value: **5 - moderate heat indicator, occurring from lowland to montane belt, mainly in submontane-temperate areas**  
Moisture indicator value: **5 - indicator of fresh soils, focus on soils of average moisture, missing on wet and on soils that frequently dry out**  
Reaction indicator value: **4 - transition between values 3 and 5**  
Nutrient indicator value: **6 - transition between values 5 and 7**  
Salinity indicator value: **0 - not salt tolerant, glycophyte**

## **Habitat and sociology**

Affinity to the forest environment  
Affinity to the forest environment in Thermophyticum: **0 - taxon that does not spontaneously occur in Czech forests**  
Affinity to the forest environment in Mesophyticum and Oreophyticum: **0 - taxon that does not spontaneously occur in Czech forests**

## **Distribution and frequency**

Elevational belt in the Czech Republic: **lowlands, colline belt, submontane belt,**

### **montane belt**

Occurrence frequency in the basic grid mapping cells and quadrants of the basic grid  
mapping cells: 405

taxon.data.freq\_in\_quad: 665

### **Threats and protection**

Red List 2017 (national categories): **taxon is not on the Red List**

Red List 2017 (IUCN categories): **LC(NA) - least concern (taxon is not on the Red List)**

Legal protection: **not protected by law**