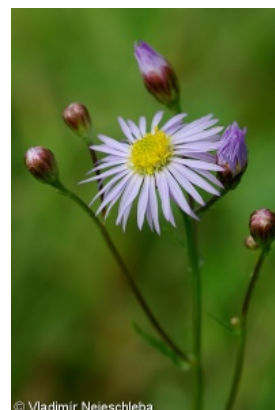
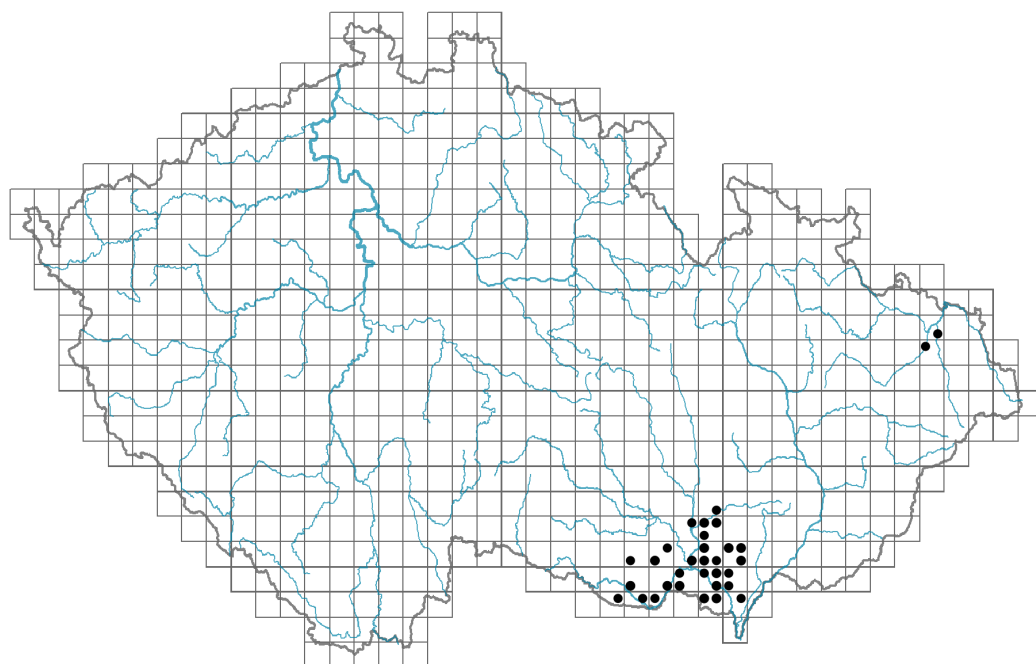


Tripolium pannonicum subsp. *pannonicum*

Distribution

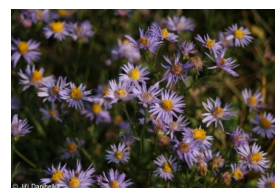


Map info

● revised records

○ unrevised records

On the map are not visualized records without the coordinates and records marked as incorrect or doubtful.



Habitus and growth type

Height [m]: **0.1-0.7**

Growth form: **clonal herb**

Life form: **therophyte (hemicryptophyte)**

Life strategy (Pierce method based on leaf traits): **CR**

Life strategy (Pierce method, C-score): **57.4 %**

Life strategy (Pierce method, S-score): **0 %**

Life strategy (Pierce method, R-score): **42.6 %**

Leaf

Leaf presence and metamorphosis: **leaves present, not modified**

Leaf arrangement (phyllotaxis): **alternate**

Leaf shape: **simple - entire**

Stipules: **absent**

Petiole: **both present and absent**

Flower

Flowering period [month]: **June-September**

Flower colour: **yellow, blue, blue-violet**

Flower symmetry: **actinomorphic, zygomorphic**

Perianth type: **calyx reduced, corolla present**

Perianth fusion: **fused**

Shape of the sympetalous corolla or syntepalous perianth: **ligulate, tubular**

Calyx fusion: **pappus**

Inflorescence type: **corymbothyrsus ex anthodiis compositus**

Generative reproduction type: **facultative allogamy**

Fruit, seed and dispersal

Fruit type: **dry fruit - achene/cypsela/samara**

Fruit colour: **brown**

Dispersal unit (diaspore): **fruit, infrutescence or its part**

Dispersal strategy: **Epilobium (mainly anemochory and autochory)**

Belowground organs and clonality

Type of clonal growth organ: **epigeogenous rhizome**

Freely dispersible organs of clonal growth: **absent**

Shoot life span (cyclicity): **dicyclic or polycyclic shoots prevailing**

Branching type of stem-derived organs of clonal growth: **sympodial**

Primary root: **absent**

Persistence of the clonal growth organ [year]:

Number of clonal offspring: **3.5**

Lateral spreading distance by clonal growth [m]: **0.01**

Clonal index: **4**

Bud bank

Number of buds per shoot at the soil surface (root buds excluded):

Number of buds per shoot at a depth of 0–10 cm (root buds excluded):

Number of buds per shoot at a depth greater than 10 cm (root buds excluded):

Size of the belowground bud bank (root buds excluded):

Depth of the belowground bud bank (root buds excluded) [cm]: **4**

Number of buds per shoot at the soil surface (root buds included):

Number of buds per shoot at a depth of 0–10 cm (root buds included):

Number of buds per shoot at a depth greater than 10 cm (root buds included):

Size of the belowground bud bank (root buds included):

Depth of the belowground bud bank (root buds included) [cm]: **4**

Trophic mode

Parasitism and mycoheterotrophy: **autotrophic**

Carnivory: **non-carnivorous**

Symbiotic nitrogen fixation: **no nitrogen-fixing symbionts**

Karyology

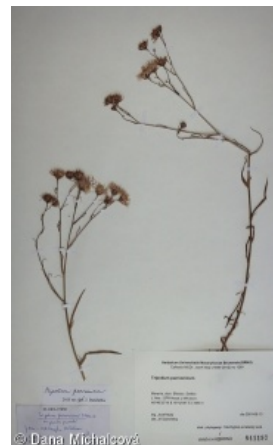
Chromosome number (2n): **18**

Ploidy level (x): **2**

2C genome size [Mbp]: **15575.57**

1Cx monoploid genome size [Mbp]: **7787.79**

Genomic GC content: **41.3 %**



Taxon origin

Origin in the Czech Republic: **native**

Ecological indicator values

Ellenberg-type indicator values

Light indicator value: **7 - half-light plant, mostly occurring at full light, but also in the shade up to about 30% of diffuse radiation incident in an open area**

Temperature indicator value: **7 - heat indicator, occurring in relatively warm lowlands**

Moisture indicator value: **5x - indicator of fresh soils, focus on soils of average moisture, missing on wet and on soils that frequently dry out (generalist)**

Reaction indicator value: **7 - indicator of slightly acidic to slightly basic conditions, never occurring in very acidic conditions**

Nutrient indicator value: **6 - transition between values 5 and 7**

Salinity indicator value: **8 - euhaline, on soils with a very high salt content**

Indicator values for disturbance

Whole-community disturbance frequency indicator value: **-0.1**

Herb layer disturbance frequency indicator value: **-0.1**

Whole-community disturbance severity indicator value: **0.4**

Herb layer disturbance severity indicator value: **0.42**

Whole-community structure based disturbance indicator value: **0.63**

Herb layer structure-based disturbance indicator value: **0.67**

Habitat and sociology

Occurrence in habitats

4 Wetland and riverine herbaceous vegetation

4B Halophilous reed and sedge beds: **2 - optimum**

10 Saline vegetation

10G Continental vegetation of annual halophilous grasses: **1 - rare occurrence**

10H Inland vegetation of succulent halophytes: **2 - optimum**

10I Inland saline meadows: **2 - optimum**

10J Saline steppes: **2 - optimum**

Affinity to the forest environment

Affinity to the forest environment in Thermophyticum: **0 - taxon that does not spontaneously occur in Czech forests**

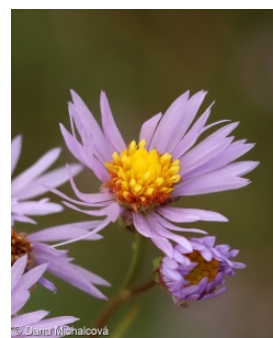
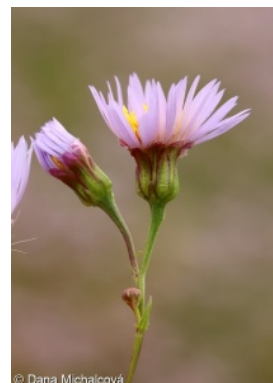
Affinity to the forest environment in Mesophyticum and Oreophyticum: **0 - taxon that does not spontaneously occur in Czech forests**

Diagnostic taxon

Diagnostic taxon of classes: [**TB Thero-Salicornietea strictae**](#), [**TC Festuco-Puccinellietea**](#)

Diagnostic taxon of alliances: [**TBA Salicornion prostratae**](#), [**TCA Puccinellion limosae**](#), [**TCB Juncion gerardii**](#)

Diagnostic taxon of associations: [**MCB01 Astero pannonici-Bolboschoenetum compacti**](#), [**TAA02 Heleochloëtum schoenoidis**](#), [**TBA01 Salicornietum prostratae**](#), [**TBA02 Spergulario marginatae-Suaedetum prostratae**](#), [**TCA01 Puccinellietum limosae**](#), [**TCB01 Scorzonero parviflorae-Juncetum gerardii**](#), [**TCB03 Agrostio**](#)



[stoloniferae-Juncetum ranarii](#)

Constant taxon

Constant taxon of classes: [TB Thero-Salicornietea strictae](#)

Constant taxon of alliances: [TBA Salicornion prostratae](#), [TCA Puccinellion limosae](#)

Constant taxon of associations: [TBA01 Salicornietum prostratae](#), [TCA01 Puccinellietum limosae](#)

Dominant taxon

Dominant taxon of associations: [TCA01 Puccinellietum limosae](#)

Ecological specialization indices

Ecological specialization index for all vegetation types: **5.6**

Ecological specialization index for non-forest vegetation: **5.6**

Distribution and frequency

Continentality degree: **8**

Distribution range extension along the continentality gradient: **4**

Elevational belt in the Czech Republic: **lowlands**

Occurrence frequency in the basic grid mapping cells and quadrants of the basic grid mapping cells: **21**

taxon.data.freq_in_quad: **34**

Commonness in vegetation plots from the Czech Republic

Occurrence frequency in vegetation plots: **0.2 %**

Occurrence frequency in vegetation plots with a cover above 5%: **17.4 %**

Occurrence frequency in vegetation plots with a cover above 25%: **6.5 %**

Occurrence frequency in vegetation plots with a cover above 50%: **6.5 %**

Mean percentage cover in vegetation plots: **7.3 %**

Maximum percentage cover in vegetation plots: **63 %**

Number of habitats with taxon occurrence in the Czech Republic

Number of narrow habitats in which the taxon occurs: **5**

Number of narrow habitats in which the taxon has its optimum: **4**

Number of broad habitats in which the taxon occurs: **2**

Number of broad habitats in which the taxon has its optimum: **2**

Threats and protection

Red List 2017 (national categories): **C1t - critically threatened taxon, declining**

Red List 2017 (IUCN categories): **CR - critically endangered**

Legal protection: **critically threatened taxon**