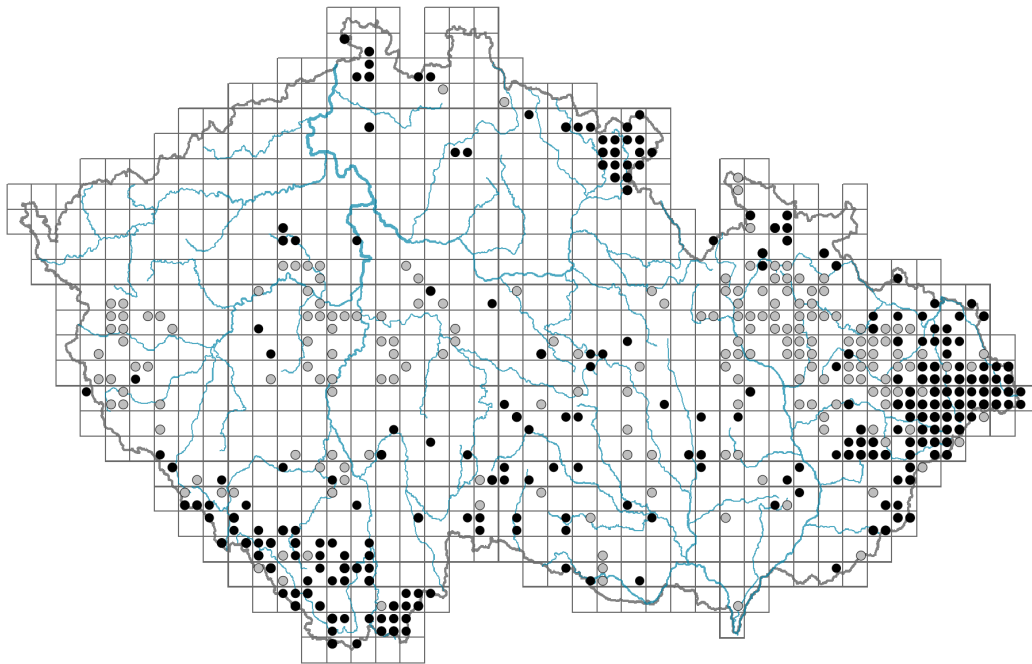


Dryopteris affinis agg.

Distribution



© Stanislav Hendrych

Map info

● revised records

● unrevised records

On the map are not visualized records without the coordinates and records marked as incorrect or doubtful.



© Stanislav Hendrych



© Stanislav Hendrych



© Stanislav Hendrych

Habitus and growth type

Height [m]: **0.2-1.2**

Growth form: **clonal herb**

Life form: **hemicryptophyte**

Life strategy: **CS - competitor/stress-tolerator**

Leaf

Leaf presence and metamorphosis: **leaves present, not modified**

Leaf arrangement (phyllotaxis): **rosulate**

Leaf shape: **compound - bipinnate**

Stipules: **absent**

Petiole: **present**

Leaf life span: **evergreen**

Leaf anatomy: **mesomorphic, hygromorphic**

Flower

Flowering period [month]: **July-September**

Dicliny: **synoecious**

Fruit, seed and dispersal

Reproduction type: **by seed/spores and vegetatively**

Dispersal unit (diaspore): **spore**

Dispersal strategy: **Lycopodium (mainly anemochory)**

Myrmecochory: **non-myrmecochorous (b)**

Belowground organs and clonality

Shoot metamorphosis: **rhizome**

Storage organ: **rhizome**

Type of clonal growth organ: **epigeogenous rhizome**

Freely dispersible organs of clonal growth: **absent**

Primary root: **absent**

Persistence of the clonal growth organ [year]:

Number of clonal offspring: **0.5**

Lateral spreading distance by clonal growth [m]: **0.01**

Clonal index: **2**

Bud bank

Number of buds per shoot at the soil surface (root buds excluded):

Number of buds per shoot at a depth of 0–10 cm (root buds excluded):

Number of buds per shoot at a depth greater than 10 cm (root buds excluded):

Size of the belowground bud bank (root buds excluded):

Depth of the belowground bud bank (root buds excluded) [cm]:

Number of buds per shoot at the soil surface (root buds included):

Number of buds per shoot at a depth of 0–10 cm (root buds included):

Number of buds per shoot at a depth greater than 10 cm (root buds included):

Size of the belowground bud bank (root buds included):

Depth of the belowground bud bank (root buds included) [cm]:

Trophic mode

Parasitism and mycoheterotrophy: **autotrophic**

Carnivory: **non-carnivorous**

Symbiotic nitrogen fixation: **no nitrogen-fixing symbionts**

Taxon origin

Origin in the Czech Republic: **native**

Ecological indicator values

Ellenberg-type indicator values

Light indicator value: **3 - shade plant, usually occurring where the incident radiation is less than 5% of that in an open area, but also at sunnier sites**

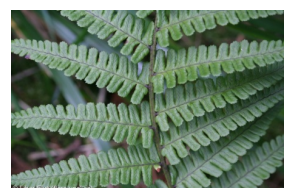
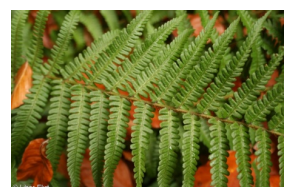
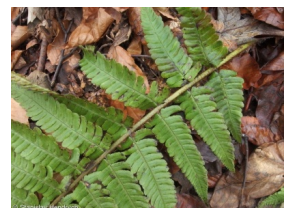
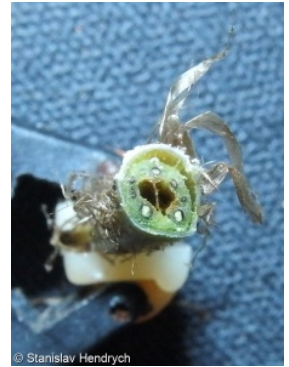
Temperature indicator value: **4 - transition between values 3 and 5**

Moisture indicator value: **6 - transition between values 5 and 7**

Reaction indicator value: **4 - transition between values 3 and 5**

Nutrient indicator value: **5 - occurring at moderately nutrient-rich sites, and less frequently at poor and rich sites**

Salinity indicator value: **0 - not salt tolerant, glycophyte**



Habitat and sociology

Occurrence in habitats

12 Forests

12C Oak-hornbeam forests: **1 - rare occurrence**

12D Ravine forests: **2 - optimum**

12E Herb-rich beech forests: **1 - rare occurrence**

12G Acidophilous beech forests: **1 - rare occurrence**

Affinity to the forest environment

Affinity to the forest environment in Mesophyticum and Oreophyticum: **1.1 - taxon occurring mainly in the closed forest**

Ecological specialization indices

Ecological specialization index for all vegetation types: **6.4**

Ecological specialization index for forest vegetation: **6.4**

Distribution and frequency

Floristic zone: **northern temperate, southern temperate, submeridional, meridional**

Floristic region: **Europe**

Continentality degree: **3**

Distribution range extension along the continentality gradient: **3**

Elevational belt in the Czech Republic: **submontane belt, montane belt**

Occurrence frequency in the basic grid mapping cells and quadrants of the basic grid mapping cells: **249**

taxon.data.freq_in_quad: **440**

Commonness in vegetation plots from the Czech Republic

Occurrence frequency in vegetation plots: **0 %**

Occurrence frequency in vegetation plots with a cover above 5%: **0 %**

Occurrence frequency in vegetation plots with a cover above 25%: **0 %**

Occurrence frequency in vegetation plots with a cover above 50%: **0 %**

Mean percentage cover in vegetation plots: **1.7 %**

Maximum percentage cover in vegetation plots: **3 %**

Number of habitats with taxon occurrence in the Czech Republic

Number of narrow habitats in which the taxon occurs: **4**

Number of narrow habitats in which the taxon has its optimum: **1**

Number of broad habitats in which the taxon occurs: **1**

Number of broad habitats in which the taxon has its optimum: **1**